



#GET OFF

DEALER BOOK
V2.4



SYNDICATE 4

COLOR // GREY/BLACK GOLD



THE SYNDICATE 4

OUR FLAGSHIP MODEL REMAINS UNCOMPROMISED, COMING STANDARD WITH OATH VANGUARD WHEELS, THERMOFORMED SEAT PAD, CRANK SET OR PEGS OF YOUR CHOICE, TEKTRU HYDROLIC DISC BRAKE AND THE LIST GOES ON.

RACE READY STRAIGHT OUT OF THE BOX. ALL NEW PAINT JOB WITH GOLD HIGHLIGHTS HITS THE MARK!

FRONT FRAME	TRIAD exclusive <i>SNAKE HEAD</i> gusseted twin tube frame design	HUB	Fully sealed internal Freewheel
REAR FRAME	TRIAD exclusive <i>SENTINEL</i> platform	TYRE	OATH <i>BROGADSIDE</i> 20 x 2.4"
FRONT FORK	<i>COMMANDER</i> Elite 4130 Chrome-moly	CRANK	89mm alloy cranks and exclusive <i>ROTA</i> peg adaptor
HEADSET	OATH <i>SILM JTM</i> 1 1/8	PEDAL	Large resin anti slip platform
HANDLEBAR	OATH alloy oversize Ø31.8 mm, 640mm wide 20mm rise	SEAT	Ergonomically designed, <i>LOTUS</i> seat
STEM	OATH anodised 4 bolt forged 45mm ext.	SEAT BASE	Quick release adjustable slider
GRIP	OATH <i>BERMUDA</i> TPR 165mm	SEAT PAD	Triad thermoformed padded seat liner
BRAKE	Tektro Hydraulic 160mm roto	REAR AXLE	1 piece 15mm heat treated Boron steel
FRONT RIM	OATH <i>DYNASTY</i> 50mm anodized double wall alloy	REAR WHEELS	OATH <i>VANGUARD</i> PVC
		WHEEL BEARINGS	Superior ABEC 9









NOTORIOUS 4

CUSTOM

HOW TO BUILD A COMPLETE







- STEP 1** ORDER 1 NOTORIOUS BLACK FRAME SET #72512
- STEP 2** ORDER 1 COLOURED OATH FORGED STEM FROM THE RIGHT
- STEP 3** ORDER 1 SET OF COLOURED OATH 31.8" BARS BELOW
- STEP 4** ORDER 1 OATH DYNASTY WHEEL SET ABOVE

STEP 2
ORDER 1 OATH FORGED STEM FROM THE RIGHT

- | | | | | | |
|---|---|---|---|---|---|
|  |  |  |  |  |  |
| #72461 | #72464 | #72465 | #72466 | #72467 | #72468 |
| 9347926001614 | 9347926002840 | 9347926002857 | 9347926002864 | 9347926002871 | 9347926002888 |
| Ano Black | Ano Blue | Ano Purple | Ano Red | Ano Green | Ano Orange |

STEP 3
ORDER 1 SET OF OATH 31.8" BARS BELOW

- | | | | |
|---|--------|---------------|------------|
|  | #72462 | 9347926001621 | Ano Black |
|  | #72469 | 9347926002895 | Ano Blue |
|  | #72470 | 9347926002901 | Ano Purple |
|  | #72471 | 9347926002918 | Ano Red |
|  | #72472 | 9347926002925 | Ano Green |
|  | #72473 | 9347926002932 | Ano Orange |

- | | | | |
|--|--------|---------------|------------|
|  | #72421 | 9347926001737 | Ano Black |
|  | #72424 | 9347926002796 | Ano Blue |
|  | #72425 | 9347926002802 | Ano Purple |
|  | #72426 | 9347926002819 | Ano Red |
|  | #72427 | 9347926002826 | Ano Green |
|  | #72428 | 9347926002833 | Ano Orange |

STEP 1
ORDER #72512

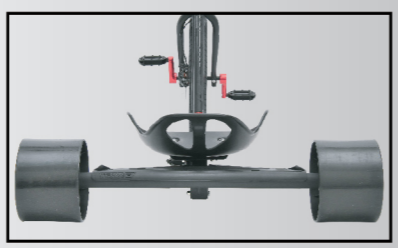
STEP 4
ORDER 1 OATH DYNASTY WHEEL SET ABOVE



OATH 51MM 1 1/8 HEADSET



SEALED FREEWHEEL HUB WITH ANODIZED ROTOR MOUNT



20% WIDER 15MM HEAT TREATED BORON STEEL AXLE



TRIAD COMMANDER ONE TOOL ASSEMBLY FORK



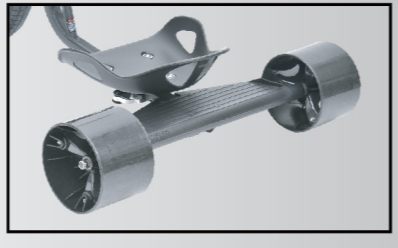
TRIAD QUICK RELEASE ADJUSTABLE SEAT SLIDER



OATH TRACKER TYRE



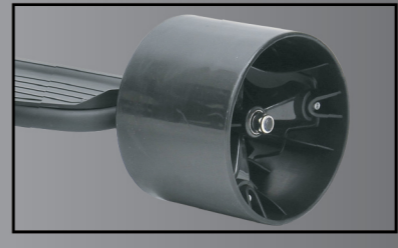
OATH DUAL PISTON MECHANICAL DISC BRAKE



TRIAD EXCLUSIVE SENTINEL PLATFORM



OATH DYNASTY 2 50MM ALLOY DOUBLE WALL RIM



TRIAD 49ER POLYPROPYLENE WHEEL



-  WWW.TRIADDRIFTTRIKES.COM
-  TRIADDRIFTTRIKES
-  @TRIADDRIFTTRIKES
-  INFO@TRIADDRIFTTRIKES.COM



THE NOTORIOUS 4

COMES FULLY COMPLETE WITH THE EXCEPTION OF THE FRONT WHEEL ASSEMBLY, HANDLE BAR AND STEM.

SO THAT YOU CAN CUSTOMISE YOUR TRIKE BY CHOOSING THE BEST COLOUR COMBINATION THAT WILL SUIT THE BLACK FRAME PERFECTLY FOR YOU. WITH 6 ANODISED COLOURS TO CHOOSE FROM YOU CAN CHANGE THE COLOUR OF YOUR CRANKS, HANDLE BAR, HEAD STEM AND FRONT WHEEL.

FRONT FRAME	TRIAD exclusive <i>SNAKE HEAD</i> gusseted twin tube frame design	HUB	Fully sealed anodise Aluminium freewheel
REAR FRAME	TRIAD exclusive <i>SENTINEL</i> platform	TYRE	OATH <i>TRACKER</i> 20 x 2.25"
FRONT FORK	<i>COMMANDER</i> Elite 4130 Chrome-moly	CRANK	89mm alloy cranks
HEADSET	OATH <i>SLIM JTM</i> 1 1/8	PEDAL	Large resin anti slip platform
HANDLEBAR	Anodised oversize Ø31.8 Aluminium	SEAT	Ergonomically designed, <i>LOTUS</i> seat
STEM	4 bolt forged alloy, 45mm ext.	SEAT BASE	Quick release adjustable slider
GRIP	OATH <i>BERMUDA</i> TPR 165mm	REAR AXLE	1 piece 15mm heat treated Boron steel
BRAKE	OATH dual piston mechanical disc brake	REAR WHEELS	OATH <i>49ER</i> PP
FRONT RIM	Dynasty anodised wheel set	WHEEL BEARINGS	Superior ABEC 7

UNDERWORLD 4

COLOR // NEO CHROME ELECTROPLATED COPPER/BLACK FADE



THE UNDERWORLD 4

THE TRIED AND TESTED UNDERWORLD 4 RECEIVES A MAKE OVER FOR THIS SEASON. INCLUDING A NEO CHROME ELECTROPLATED MODEL FOR THOSE WHO WANT SOME FLARE AND A GLOSS COPPER TO BLACK FADE FOR THOSE A LITTLE MORE CONSERVATIVE.

NEW OATH BERMUDA GRIPS COME STANDARD. ALREADY A PROVEN RELIABLE BEAST BUT IF YOU WANT TO UPGRADE IT THE FORK COMES DISC READY AND VANGUARD WHEELS WILL FIT STRAIGHT ON WITHOUT MODIFICATION.

FRONT FRAME	TRIAD exclusive <i>SNAKE HEAD</i> gusseted twin tube frame design	HUB	Internal Freewheel
REAR FRAME	TRIAD exclusive <i>SENTINEL</i> platform	TYRE	OATH <i>SWERVE</i> 20 x 2.35"
FRONT FORK	<i>COMMANDER</i> V brake and disc brake mount compatible	CRANK	89mm steel cranks
HEADSET	OATH <i>SILM JTM</i> 1 1/8	PEDAL	Large resin anti slip platform
HANDLEBAR	580mm raise bar	SEAT	Ergonomically designed, <i>LOTUS</i> seat
STEM	4 bolt alloy, 45mm ext.	SEAT BASE	Quick release adjustable slider
GRIP	OATH <i>BERMUDA</i> TPR 165mm	REAR AXLE	1 piece 15mm heat treated Boron steel
BRAKE	Alloy V brake	REAR WHEELS	OATH <i>49ER</i> PP
FRONT RIM	Alloy rim with COLOUR spokes	WHEEL BEARINGS	Superior ABEC 5

COUNTERMEASURE 3

COLOR // ELECTRO BLUE/BLACK



THE COUNTERMEASURE 3

WE HAVE HAD A BIT OF FUN WITH THE COUNTERMEASURE 3 THIS YEAR WITH SUPER BRIGHT ELECTROPLATE FINISHES AND A NEW SPLATTER GRAPHIC PACK. THESE WILL CERTAINLY CATCH THE EYE OF THE TARGETED 7-12 YEAR OLD AGE BRACKET. DUE TO ITS POPULARITY WE HAVE 3 COLOURS IN THE RANGE THIS SEASON

FRONT FRAME	TRIAD exclusive <i>SNAKE HEAD</i> gusseted twin tube frame design	HUB	Internal Freewheel
REAR FRAME	TRIAD original	TYRE	18 x 2.1 BMX
FRONT FORK	<i>COMMANDER</i> V brake	CRANK	76mm steel cranks
HEADSET	OATH <i>SILM JTM</i> 1 1/8	PEDAL	Resin anti slip platform
HANDLEBAR	560mm raise bar	SEAT	Low back tracktor seat
STEM	4 bolt alloy, 45mm ext.	SEAT BASE	Quick release adjustable slider
GRIP	OATH <i>BERMUDA</i> TPR 165mm	REAR AXLE	15mm heat treated Boron steel
BRAKE	Alloy V brake	REAR WHEELS	OATH <i>49ER</i> PP
FRONT RIM	18" Alloy rim with COLOUR spokes	WHEEL BEARINGS	Superior ABEC 5

COLOR OPTIONS

ELECTRO PINK
SATIN BLACK

ELECTRO BLUE
SATIN BLACK

ELECTRO SILVER
SATIN BLACK



15MM AXLE STUBS



UPGRADED V BRAKE FOR BRAKING PERFORMANCE



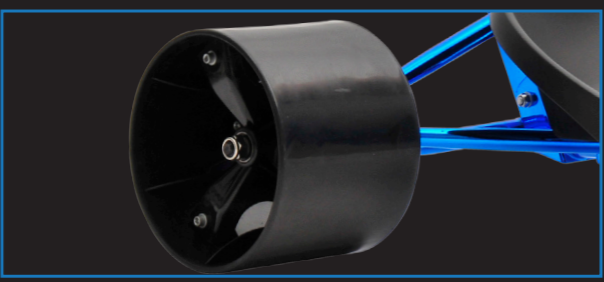
OATH 5114 J17
1 1/8 HEADSET



TRIAD COMMANDER
ONE TOOL ASSEMBLY FORK



LOW BACK
TRACTOR SADDLE

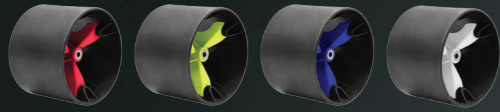


TRIAD 49ER
POLYPROPYLENE WHEELS

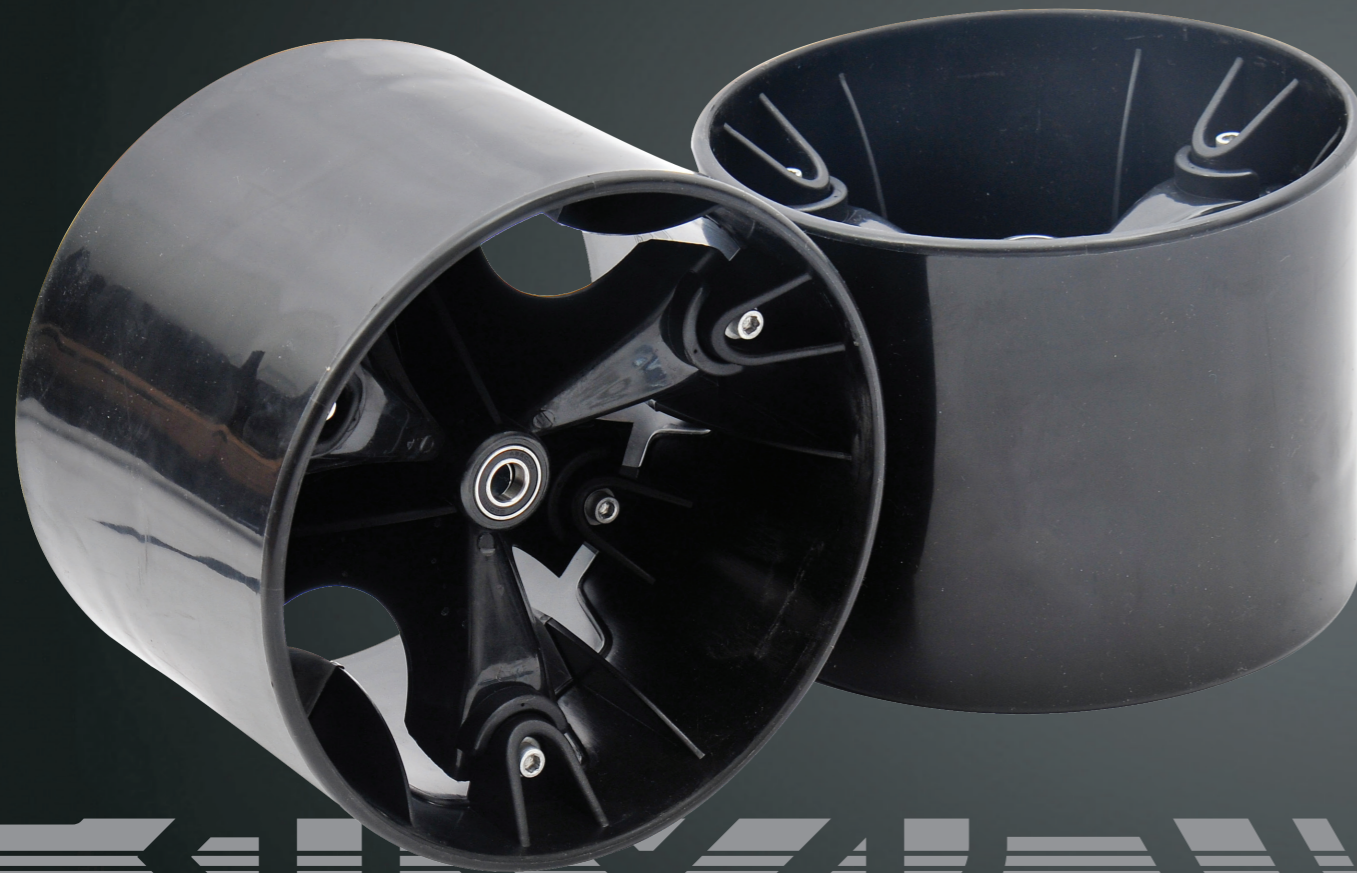
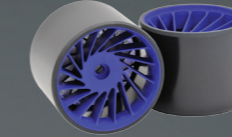


EXCLUSIVE SNAKE HEAD
GUSSETED
TWIN TUBE FRAME DESIGN

COLORS AVAILABLE



COLORS AVAILABLE



2019/20 49'er REAR WHEEL KIT

COLORS // VARIOUS

PITCH

2017 TRIAD 49'ER WHEELS HAVE BEEN REVAMPED AND UPGRADED FOR THE BIGGER BEARINGS USED ON THE NEW 2017 15MM WIDER AXLES. THIS WHEEL WAS THE FIRST PURPOSE BUILT DRIFT TRIKE WHEEL AND ITS INTERCHANGEABLE SLICK CHANGED THE SPORT ALLOWING MULTIPLE COMPOUNDS TO SUIT THE USERS ABILITY AND SLIDING CONDITIONS. IMPROVED DURABILITY HAS BEEN PROVEN WITH ITS LIGHT WEIGHT, COST EFFECTIVENESS AND ADAPTABILITY.

HIGHLIGHTS

KIT INCLUDES 2 X PP SLICKS, HUBS, MOUNTING BOLTS, BEARINGS AND SPACER
COMES STANDARD WITH 15MM BEARING KIT*

DETAILS

BLACK/YELLOW	ORDER # 72002-15
BLACK/RED	ORDER # 72003-15
BLACK/BLUE	ORDER # 72004-15
BLACK/WHITE	ORDER # 72005-15
BLACK/BLACK	ORDER # 72007-15

* TO FIT TO 12MM AXLE STUBS AFTER MARKET BEARING (#6001) WILL FIT THESE WHEELS

2019/20 VANGUARD REAR WHEEL KIT

COLORS // VARIOUS

PITCH

GRABBING A SET OF VANGUARDS MEANS NO MORE TRYING TO FIT GO-KART WHEELS, NO MORE LOOKING FOR THE RIGHT SIZE PVC SLEEVE - NO MORE FRUSTRATION!
THE PATENTED VANGUARD WHEEL SET IS CONSTRUCTED WITH A GLASS-REINFORCED NYLON HUB WITH A 11MM PVC SLICK WRAPPED AROUND IT. THE CHAMFERED EDGE REDUCES THE CHANCES OF HIGH SIDING, GIVING YOU THE CONFIDENCE TO HOLD YOUR SLIDE.

WE DEVELOPED THIS PURPOSE BUILT DRIFT WHEEL WHICH IS SAFER AND MORE CONVENIENT. LOOKING AT THE ECONOMICS OF IT, WE REDUCED THE 2017 VANGUARDS PRICE BY 30% SO EVERYONE CAN ENJOY A SERIOUS WHEEL FOR A SERIOUS RIDE.

#GETSIDEWAYS

HIGHLIGHTS

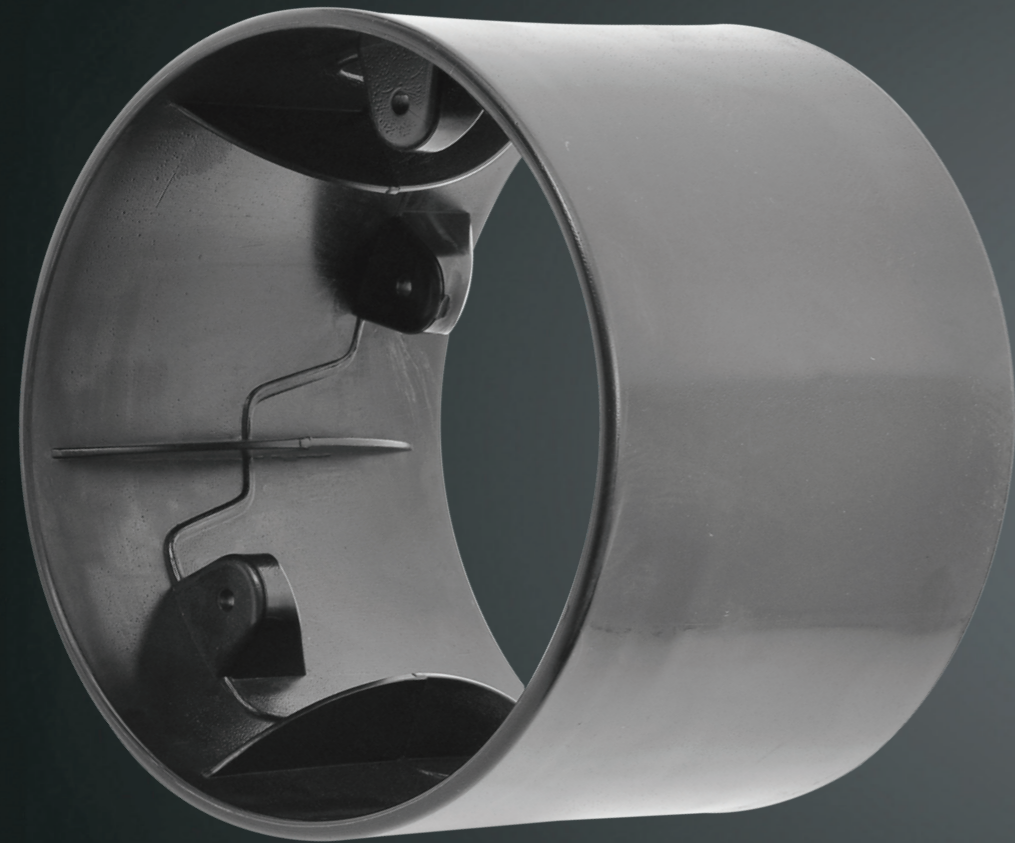
KIT INCLUDES:
TWO VANGUARD MACHINED 11MM THICK PVC SLICKS
TWO SETS OF OUR SPECIALLY DESIGNED NYLON REINFORCED HUBS
COMES STANDARD WITH 15MM BEARING KIT*

DETAILS

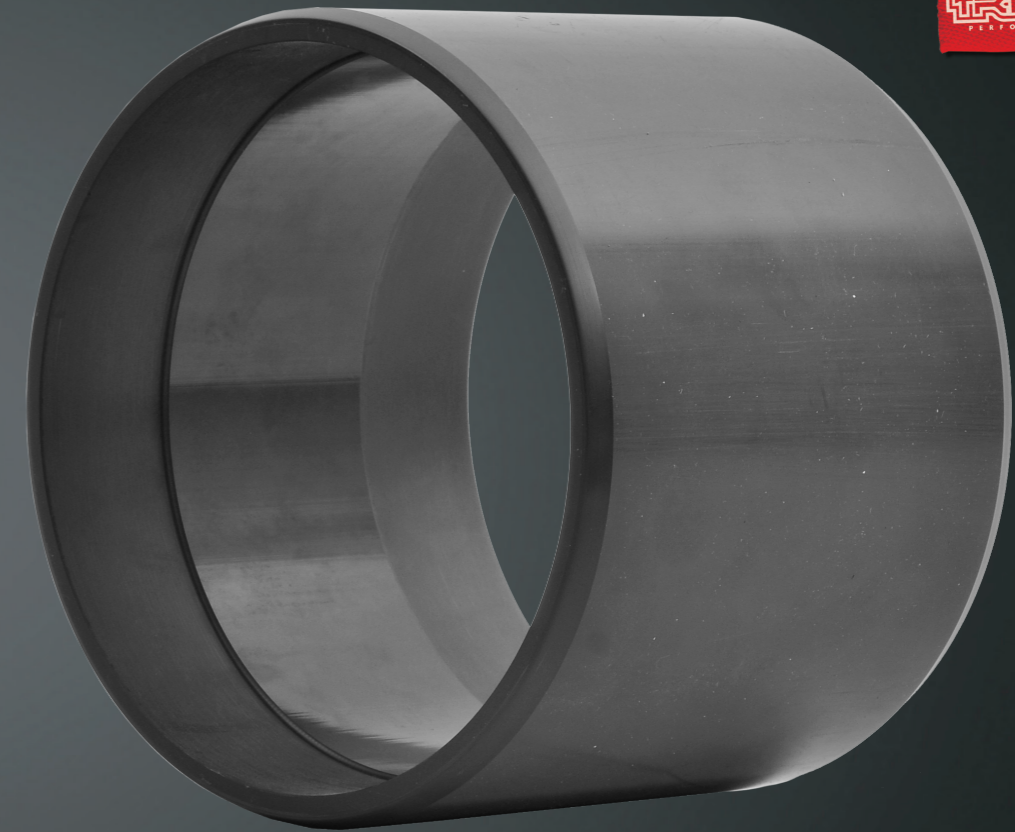
BLACK/BLACK	ORDER # 72008
BLACK/BLUE	ORDER # 72009
BLACK/RED	ORDER # 72010

* TO FIT TO 12MM AXLE STUBS AFTER MARKET BEARING (#6001) WILL FIT THESE WHEELS

COLORS AVAILABLE



COLORS AVAILABLE



2019/20 49'er P.P SLICK

COLOR // BLACK

PITCH

POLYPROPYLENE (PP) IS THE STANDARD WHEEL THAT COMES WITH OUR COMPLETE TRIKES. IT IS A GREAT ALL ROUNDER. THE MOST AFFORDABLE WITH GOOD STRENGTH. THE DURABILITY GIVES YOU OPTIMUM CONTROL ON SLIPPERY SURFACES. POLYPROPYLENE IS A GOOD CHOICE FOR NOVICE RIDERS WITH THE CONTROL FACTOR IN MIND.

HIGHLIGHTS

BEST ON SLIPPERY SURFACES.
SUITABLE FOR 49'ER HUBS ONLY.

DETAILS

ORDER # 72101

2019/20 VANGUARD PVC SLICK

COLOR // BLACK

PITCH

THESE VANGUARD SLEEVES ARE MACHINED PERFECTLY TO FIT THE VANGUARD HUB KEEPING THEM TIGHT, DIRECT AND SECURE. THE 11MM THICK SLICK GIVES YOU PLENTY OF MEAT TO SLIDE FOR DAYS. YOU NEEDED IT, WE DELIVERED IT.

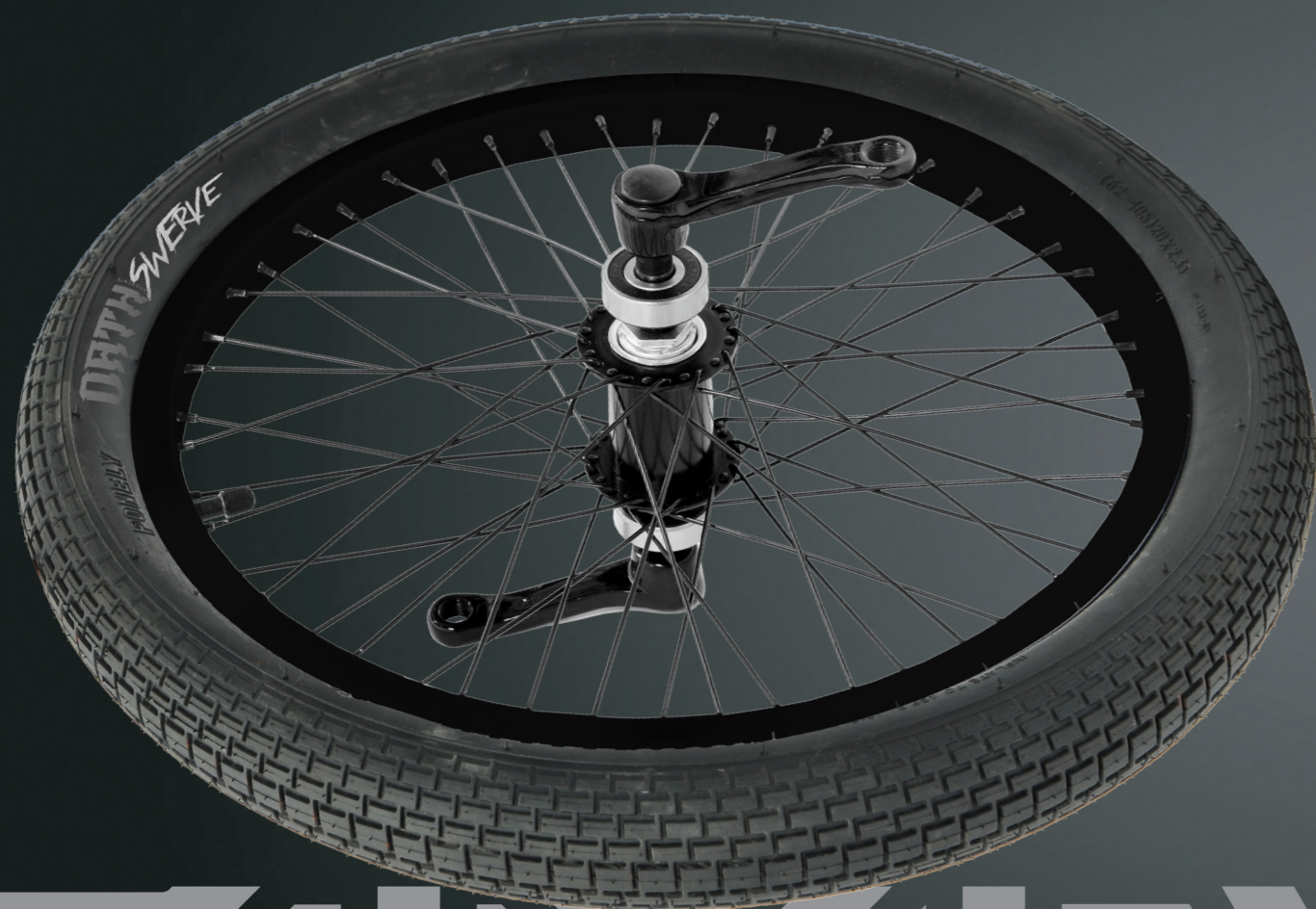
HIGHLIGHTS

A PURPOSE MADE, EXTRUDED PVC DRIFTING SLICK.
BEST FOR ALL CONDITIONS.
SUITABLE FOR VANGUARD HUBS ONLY.

DETAILS

ORDER # 72104

COLORS AVAILABLE



COLORS AVAILABLE



2019/20 OATH CARTEL FRONT KIT

COLORS // VARIOUS

PITCH

OUR LONG STANDING ALLOY RIM WITH 36 X 14G SPOKES, LACED TO A STEEL BODIED INTERNAL FREEWHEEL HUB. THESE RIMS ALSO FEATURE A SQUARED SIDEWALL FOR IMPROVED STOPPING POWER WHEN USING U OR V-BRAKES. NEW OATH 'SWERVE' TYRE AND STEEL CRANK ARMS INCLUDED. THIS IS NOT DISC COMPATIBLE.

HIGHLIGHTS

KIT INCLUDES 6002 SEALED FORK BEARINGS, NEW STEEL HUB, ALLOY RIM, CRANKS AND OATH 'SWERVE' TYRE

DETAILS

BLACK RIM WITH BLACK CRANKS
BLUE RIM WITH BLUE CRANKS
RED RIM WITH RED CRANKS

ORDER # 72411
ORDER # 72412
ORDER # 72413

2019/20 OATH DYNASTY FRONT KIT

COLORS // VARIOUS

PITCH

STRONG DOUBLE-WALL ALLOY RIM WITH 36 X 14G SPOKES AND THE OATH ALLOY HUB WITH INTERNAL FREEWHEEL. FEATURES SEALED BEARINGS FOR A FAST, SMOOTH RIDE. DISC BRAKE COMPATIBLE. NEW OATH 'TRACKER' TYRE AND 89MM ALLOY CRANKS INCLUDED.

HIGHLIGHTS

KIT INCLUDES 6002 SEALED FORK BEARINGS, ALLOY SEALED HUB, DOUBLE WALL ALLOY RIM, ALLOY CRANKS AND OATH 'TRACKER' TYRE

DETAILS

BLACK ORDER # 72421
BLUE ORDER # 72424
PURPLE ORDER # 72425
RED ORDER # 72426
GREEN ORDER # 72427
ORANGE ORDER # 72428



COLORS AVAILABLE



COLORS AVAILABLE



2019/20 COMMANDER FORK V

COLOR // BLACK

PITCH

TO REDUCE PEDAL FLEX AND INCREASE PEDAL EFFICIENCY, THE COMMANDER V'S ARE MADE FROM HI-TENSILE STEEL WITH 1.4MM THICK FORK LEGS AND ARE BOTH V-BRAKE AND DISC BRAKE READY. AS FEATURED ON THE ALL NEW UNDERWORLD 3 FOR 2017.

SPECIFICATIONS

LONG 1 1/8" STEERER TUBE FOR EASY MODIFICATION TO FIT ALMOST ANY TRIKE.
COMES WITH HEADSET INCLUDED.

DETAILS

BLUE # 72595
RED # 72596
BLACK # 72597

2019/20 COMMANDER FORK ELITE

COLOR // BLACK

PITCH

COMPLETE TRIKES ARE NOT THE EASIEST OF THINGS TO TRANSPORT BETWEEN VENUES. THE COMMANDER ELITE FORK ENABLES YOU TO REMOVE THE FRONT WHEEL IN SECONDS FOR TRANSPORTATION OR MAINTENANCE. COMES DISC BRAKE READY AND IS COMPATIBLE WITH ALL TRIAD MODELS (AND MOST OTHERS TOO!).

SPECIFICATIONS

1 1/8" STEERER TUBE.
6002 BEARING MOUNTS.
COMES WITH HEADSET.

DETAILS

BLACK ORDER # 72598
WHITE ORDER # 72599

COLORS AVAILABLE



UNDERSIDE



2019/20 LOTUS SEAT

COLOR // VARIOUS

PITCH

ERGONOMICALLY DESIGNED, DRIFT-SPECIFIC RACE SEAT WITH A SET OF FOUR, BLACK LASER-ETCHED ALLOY TRIAD MOUNTING CAPS. OFFERS COMFORT AND JUST ENOUGH FLEX TO FIT YOUR FORM.”

SPECIFICATIONS

EACH SEAT COMES WITH THE ALLOY MOUNT BOLT SET.

DETAILS

BLACK ORDER # 72561
BLUE ORDER # 72563
RED ORDER # 72562

2019/20 LOTUS PADDED SEAT LINER

COLOR // BLACK

PITCH

OUR NEW THERMOFORMED PADDED SEAT LINER WAS DESIGNED TO REDUCE VIBRATION AND INCREASE COMFORT. IT FITS PERFECTLY WITH SEAT WASHER MOUNT MOUNDINGS AND VELCRO TIE DOWNS.

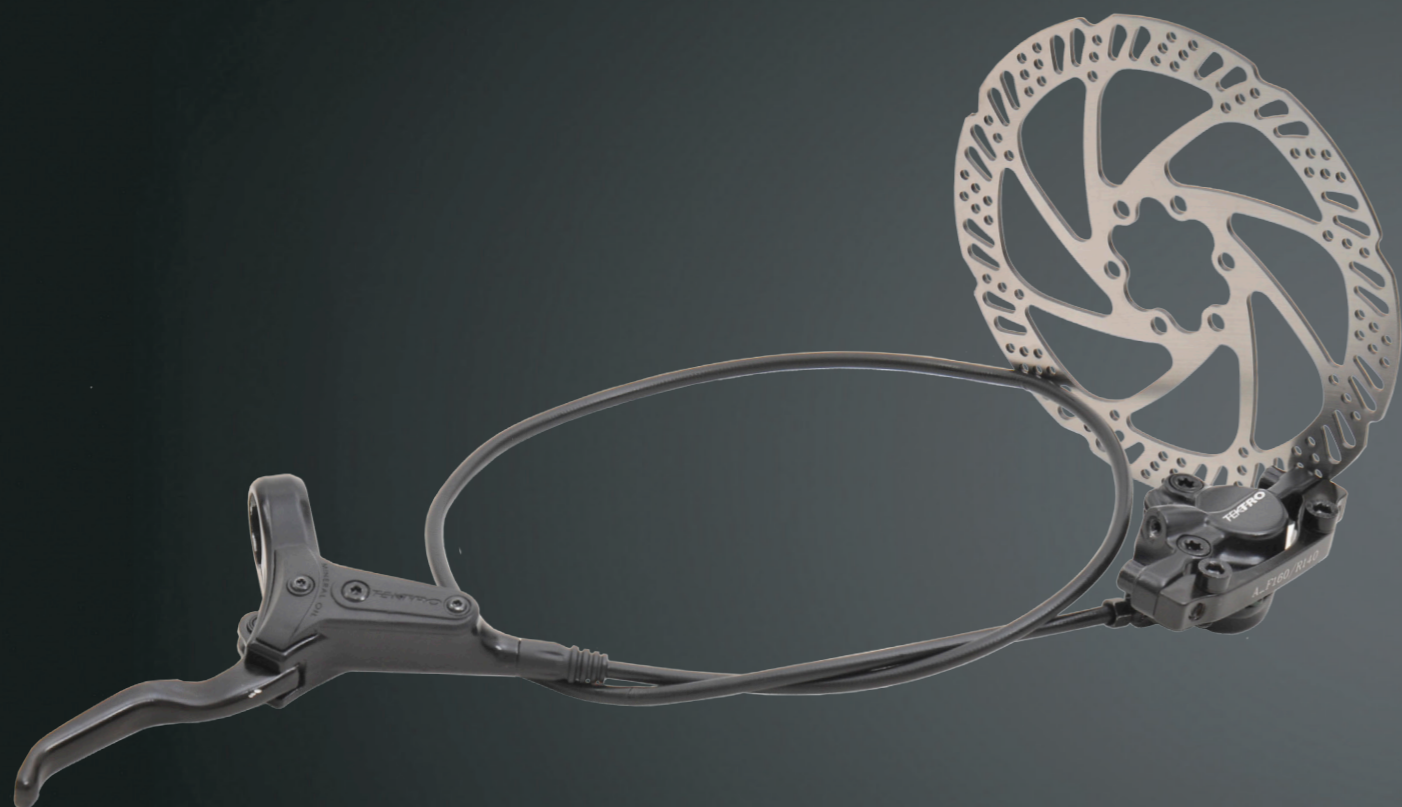
SPECIFICATIONS

MULTIPLE DENSITY FOAMS
SECURE VELCO FITTING STRAPS

DETAILS

BLACK ORDER # 72560

COLORS AVAILABLE



2019/20 HYDRAULIC BRAKE KIT

COLORS // BLACK, WHITE

PITCH

LIGHTWEIGHT AND POWERFUL BRAKING IS WHAT YOU NEED AND THE NEW HD-M285 DELIVERS JUST THAT. FEATURING DUAL PISTON CALIPER, EASY INSTALLATION AND MAINTENANCE PLUS A QUICK CHANGE PAD SYSTEM.

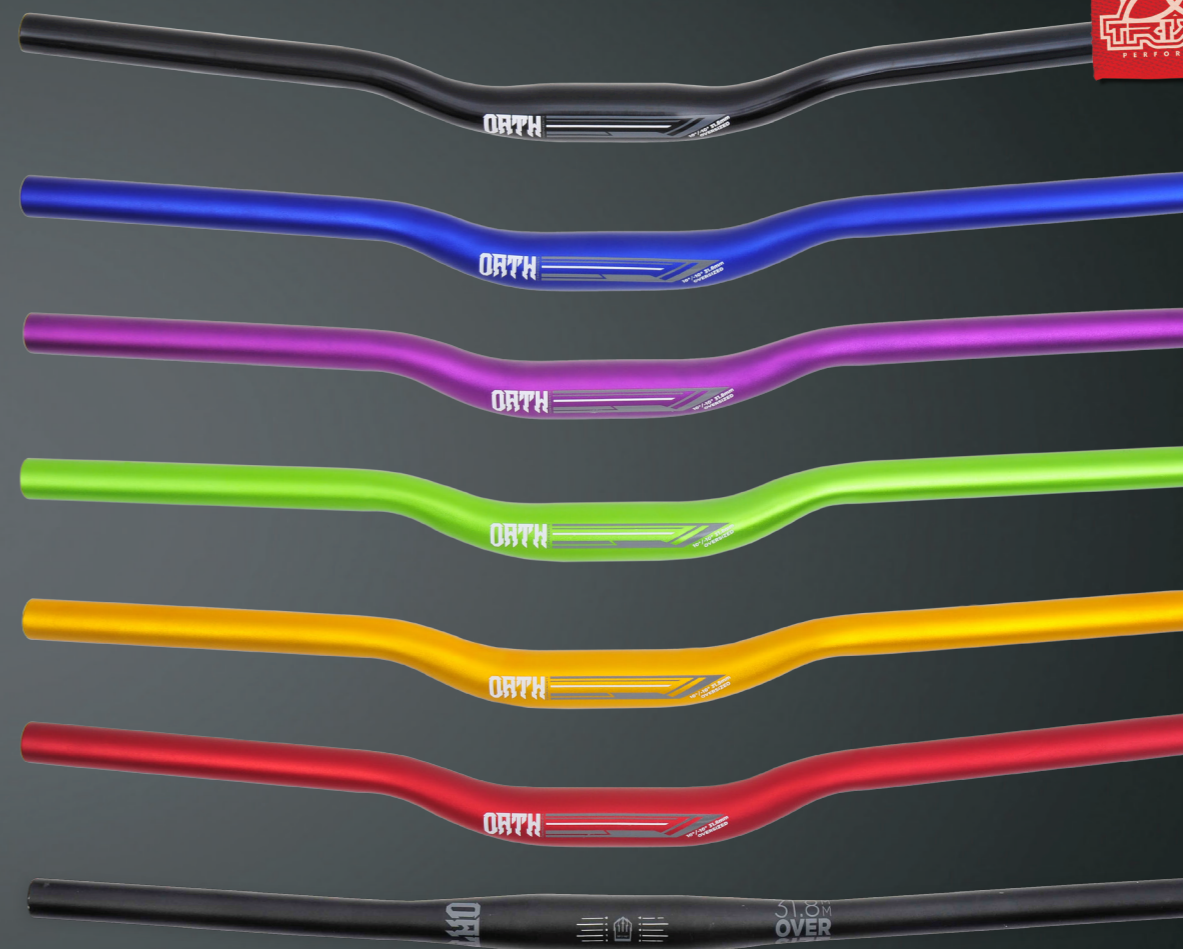
KIT INCLUDES

- "EZ-PLUG IN CALIPER" FOR ROUTING HOSE THROUGH THE FORK TUBE AND STEM. PARTS COME PLUGGED FOR INSTALLATION ONTO THE TRIKE, JUST REMOVE THE PLUGS AND JOIN THE HOSE TO THE HANDLE
- 160MM STAINLESS STEEL ROTOR
- FORGED ALLOY DUAL PISTON CALIPER AND HOSE (PRE-BLED)
- 2 FINGER LEVER WITH REACH ADJUSTMENT
- PAIR OF ORGANIC PADS (PRE-FITTED) AND ALL MOUNTING HARDWARE

DETAILS

BLACK	ORDER # 72589
WHITE	ORDER # 72588

COLORS AVAILABLE



2019/20 OATH HANDLEBARS

COLOR // VARIOUS

PITCH

OATH 6061 ALUMINIUM HANDLEBARS COME IN A RANGE OF ANODIZED COLORS TO MATCH THE CUSTOMIZATION OF YOUR TRIAD. PERSONALIZE YOUR LOOK WITH STRAIGHT BARS, ALSO AVAILABLE FOR THAT LOW TOUGH LOOK.

SPECIFICATIONS

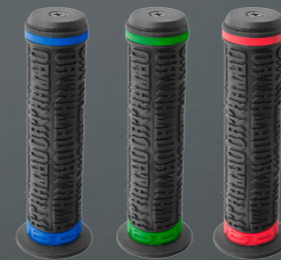
640MM WIDE - Ø31.8MM - 20MM RISE - 5° SWEEP
620MM WIDE - Ø31.8MM - NO RISE - 5° SWEEP

DETAILS

STRAIGHT 620MM BLACK	ORDER # 72462
RISER 640MM BLACK	ORDER # 72463
RISER 640MM BLUE	ORDER # 72469
RISER 640MM PURPLE	ORDER # 72470
RISER 640MM RED	ORDER # 72471
RISER 640MM GREEN	ORDER # 72472
RISER 640MM ORANGE	ORDER # 72473



COLORS AVAILABLE



INCLUDED COLORS RINGS



2019/20 OATH FORGED STEM

COLOR // VARIOUS

PITCH

A HIGH PERFORMANCE, LIGHTWEIGHT STEM WITH OPTIMAL STIFFNESS. THE NEW OATH STEM IS FORGED FROM 6061 ALUMINIUM AND CAN HANDLE ANYTHING YOU CAN THROW AT IT. COMPATIBLE WITH THE OATH HANDLEBARS (# 72462 & # 72463).

SPECIFICATIONS

FORGED 6061 ALUMINIUM
2-BOLT STEERER CLAMP
4-BOLT HANDLEBAR CLAMP FOR 31.8MM HANDLEBARS

DETAILS

BLACK	ORDER # 72461
BLUE	ORDER # 72464
PURPLE	ORDER # 72465
RED	ORDER # 72466
GREEN	ORDER # 72467
ORANGE	ORDER # 72468

2019/20 OATH CHAMELEON

COLOR // VARIOUS

PITCH

THE CHAMELEON HELPS YOU GET A GRIP WHEN YOU'RE THROWING IT DOWN. THIS GRIP FEATURES SUPER-TACKY AND DURABLE TPR, DESIGNED WITH OUR OATH LOGO PATTERN FOR MAXIMUM COMFORT AND GRIP. STYLE? WE GOT YOU COVERED WITH MATCHING COLOR RINGS TO CUSTOMIZE YOUR TRIKE.

SPECIFICATIONS

SOLID TPR RUBBER GRIP
COMES WITH 4 INTERCHANGABLE COLOR RINGS, GREY, BLUE, GREEN AND RED.
SCREW IN BAR END

DETAILS

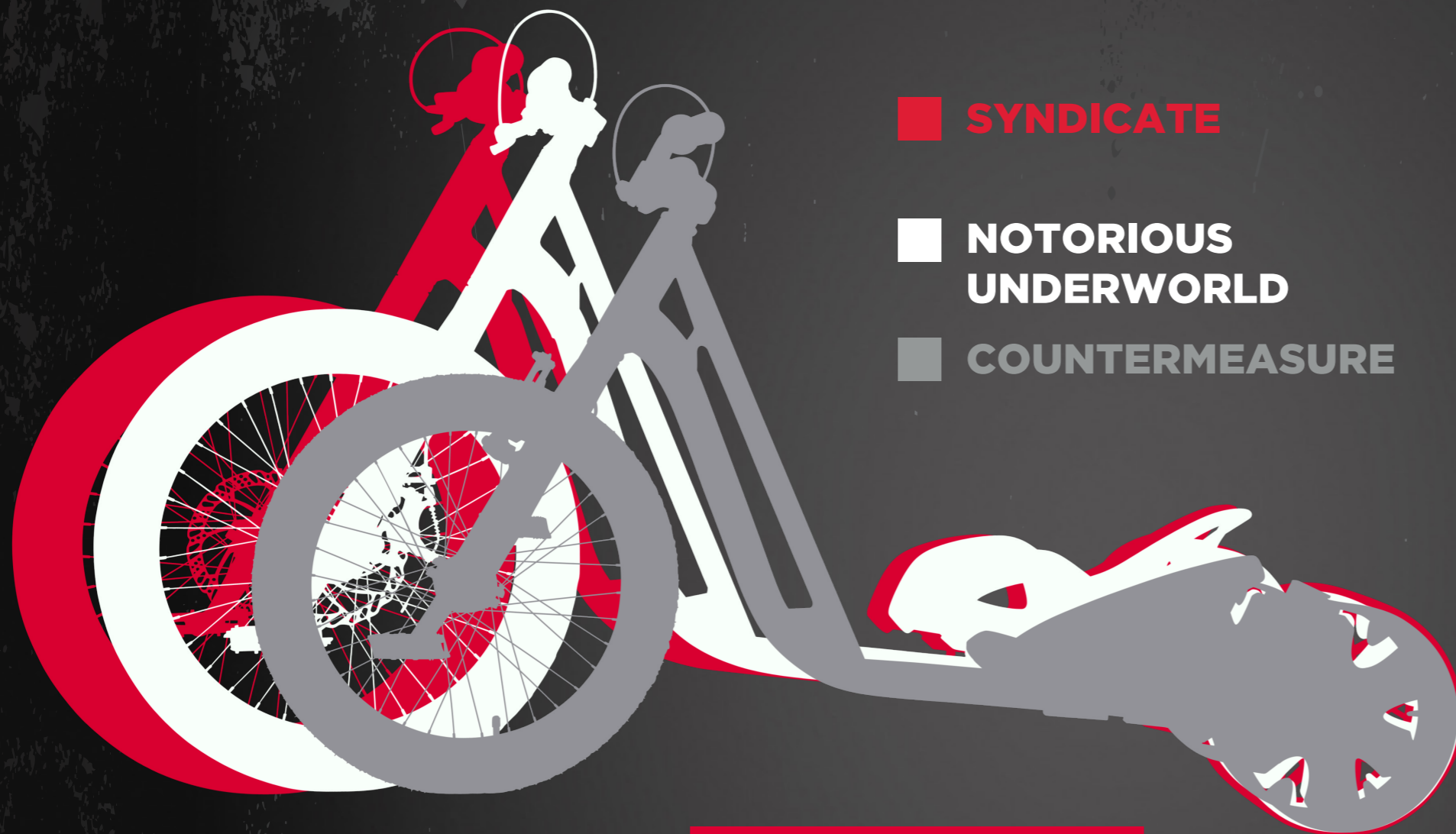
BLACK WITH 4 COLOR RING

ORDER # 72480



NEW TRIKES - NEW SIZES

WHAT SIZE SUITS YOU BEST?



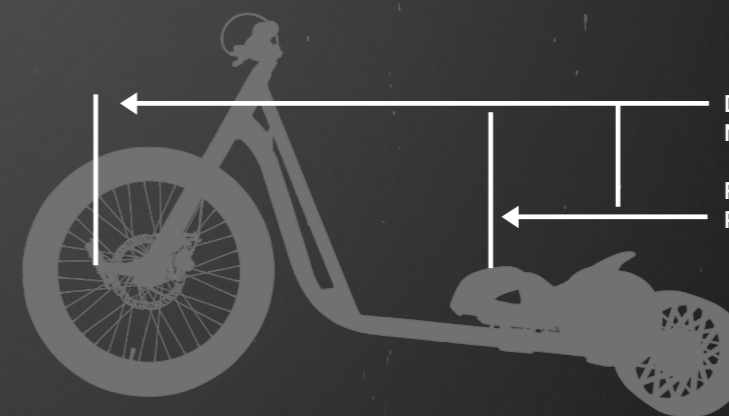
SYNDICATE

NOTORIOUS UNDERWORLD

COUNTERMEASURE



70 75 80 85 90 95 100 105 110 115cm



DISTANCE FROM FORWARD MOST PEDAL TO BACK OF SEAT

FORWARD POSITION AND REAR MOST POSITION

ENSURE YOU GET THE RIGHT FIT!

- 1 - PLACE YOUR HAND ON YOUR HIP WHERE YOUR BELT WOULD SIT
- 2 - MEASURE FROM THERE TO THE GROUND TO FIND YOUR LEG LENGTH
- 3 - TAKE THAT MEASUREMENT AND FIND WHAT MODEL SUITS YOU BEST





#GET OFF



WWW.TRIADDRIFTTRIKES.COM



[TRIADDRIFTTRIKES](https://www.facebook.com/TRIADDRIFTTRIKES)



[@TRIADDRIFTTRIKES](https://www.instagram.com/TRIADDRIFTTRIKES)



INFO@TRIADDRIFTTRIKES.COM